

ORDINANCE NO. 6524

| | |
|-----------------------------------|-------------------------|
| <i>First Reading</i> | <u>October 11, 2022</u> |
| <i>Second Reading</i> | <u>November 8, 2022</u> |
| <i>Final Passage and Adoption</i> | <u>November 8, 2022</u> |

AN ORDINANCE ANNEXING PROPERTY TO THE CORPORATE LIMITS OF THE CITY OF BISMARCK, BURLEIGH COUNTY, NORTH DAKOTA, DECLARING THE TERRITORY ANNEXED; DECLARING THE SAME TO BE A PART OF THE CORPORATE LIMITS OF SAID CITY.

BE IT ORDAINED BY THE BOARD OF CITY COMMISSIONERS OF BISMARCK, BURLEIGH COUNTY, NORTH DAKOTA:

Section 1. Territory Annexed. The territory and land hereinafter described is hereby declared and found to be a part of the corporate limits of the City of Bismarck, Burleigh County, North Dakota, as follows:

ALL OF LOT 1 BLOCK 1, LOT 1 BLOCK 5, LOT 1 BLOCK 6 AND THOSE PORTIONS OF LOTS 1 & 2 BLOCK 2 DAYBREAK SECOND ADDITION, BISMARCK, BURLEIGH COUNTY, NOT PREVIOUSLY ANNEXED, DESCRIBED AS:

BEGINNING AT THE SOUTHWEST CORNER OF AUDITOR'S LOT D OF SECTION 9, TOWNSHIP 139 NORTH, RANGE 80 WEST OF THE FIFTH PRINCIPAL MERIDIAN, BISMARCK, BURLEIGH COUNTY, NORTH DAKOTA; THENCE SOUTH 80 DEGREES 39 MINUTES 47 SECONDS WEST, ALONG THE BOUNDARY OF LOT 1 BLOCK 2 DAYBREAK SECOND ADDITION, A DISTANCE OF 122.74 FEET; THENCE SOUTH 62 DEGREES 22 MINUTES 51 SECONDS WEST, CONTINUING ALONG SAID BOUNDARY, A DISTANCE OF 700.72 FEET; THENCE SOUTH 37 DEGREES 25 MINUTES 43 SECONDS WEST, CONTINUING ALONG SAID BOUNDARY, A DISTANCE OF 315.35 FEET; THENCE SOUTH 33 DEGREES 14 MINUTES 25 SECONDS EAST, CONTINUING ALONG SAID BOUNDARY, A DISTANCE OF 852.35 FEET TO THE BOUNDARY OF LOT 2 BLOCK 2 DAYBREAK SECOND ADDITION; THENCE SOUTH 71 DEGREES 28 MINUTES 18 SECONDS WEST, A DISTANCE OF 628.47 FEET; THENCE SOUTH 27 DEGREES 47 MINUTES 24 SECONDS EAST, CONTINUING ALONG SAID BOUNDARY, A DISTANCE OF 309.66 FEET; THENCE SOUTHERLY AND TO THE LEFT, CONTINUING ALONG SAID BOUNDARY, ON A 150.00 FOOT RADIUS CURVE, AN ARC LENGTH OF 203.02 FEET; THENCE NORTH 74 DEGREES 39 MINUTES 46 SECONDS EAST, CONTINUING ALONG SAID BOUNDARY, A DISTANCE OF 760.35 FEET; THENCE NORTH 00



DEGREES 25 MINUTES 33 SECONDS EAST, A DISTANCE OF 1655.38 FEET TO THE POINT OF BEGINNING.

The above described tract contains 53.90 acres, more or less.

Section 2. Provisions Applicable. From and after the final passage and adoption of this ordinance and upon recording of this ordinance with the Burleigh County Recorder, the territory herein described shall be a part of the corporate limits of the City of Bismarck, North Dakota.



CITY OF BISMARCK PLANNING

ORDIN

950430

\$20.00

Page: 4 of 4

11/29/2022 2:03 PM

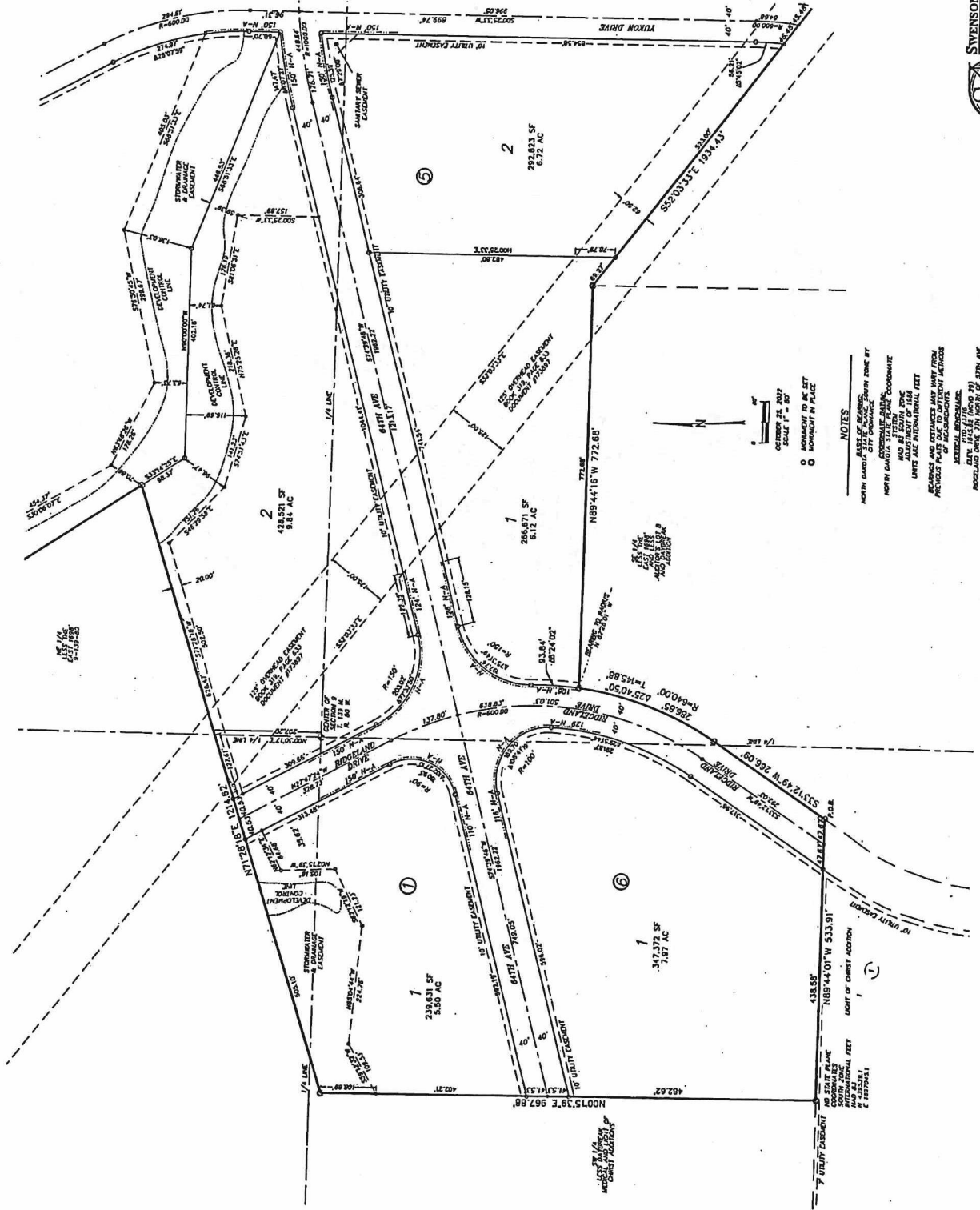
Burleigh County

Brandon Medina Deputy



DAYBREAK SECOND ADDITION

PART OF SECTION 9, TOWNSHIP 139 NORTH, RANGE 80 WEST
OF THE FIFTH PRINCIPAL MERIDIAN
BISMARCK, BURLEIGH COUNTY, NORTH DAKOTA



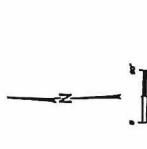
NOTES

- 1. NORTH DAKOTA STATE PLANNING BOARD BY CITY ORDINANCE.
- 2. NORTH DAKOTA STATE PLANNING BOARD BY CITY ORDINANCE.
- 3. NORTH DAKOTA STATE PLANNING BOARD BY CITY ORDINANCE.
- 4. NORTH DAKOTA STATE PLANNING BOARD BY CITY ORDINANCE.
- 5. NORTH DAKOTA STATE PLANNING BOARD BY CITY ORDINANCE.
- 6. NORTH DAKOTA STATE PLANNING BOARD BY CITY ORDINANCE.
- 7. NORTH DAKOTA STATE PLANNING BOARD BY CITY ORDINANCE.
- 8. NORTH DAKOTA STATE PLANNING BOARD BY CITY ORDINANCE.
- 9. NORTH DAKOTA STATE PLANNING BOARD BY CITY ORDINANCE.
- 10. NORTH DAKOTA STATE PLANNING BOARD BY CITY ORDINANCE.
- 11. NORTH DAKOTA STATE PLANNING BOARD BY CITY ORDINANCE.
- 12. NORTH DAKOTA STATE PLANNING BOARD BY CITY ORDINANCE.
- 13. NORTH DAKOTA STATE PLANNING BOARD BY CITY ORDINANCE.
- 14. NORTH DAKOTA STATE PLANNING BOARD BY CITY ORDINANCE.
- 15. NORTH DAKOTA STATE PLANNING BOARD BY CITY ORDINANCE.
- 16. NORTH DAKOTA STATE PLANNING BOARD BY CITY ORDINANCE.
- 17. NORTH DAKOTA STATE PLANNING BOARD BY CITY ORDINANCE.
- 18. NORTH DAKOTA STATE PLANNING BOARD BY CITY ORDINANCE.
- 19. NORTH DAKOTA STATE PLANNING BOARD BY CITY ORDINANCE.
- 20. NORTH DAKOTA STATE PLANNING BOARD BY CITY ORDINANCE.



DAYBREAK SECOND ADDITION

PART OF SECTION 9, TOWNSHIP 139 NORTH, RANGE 80 WEST
OF THE FIFTH PRINCIPAL MERIDIAN
BISMARCK, BURLEIGH COUNTY, NORTH DAKOTA



NOTES

BASE OF RECORDS: MAIN ZONE BY NORTH DAKOTA CITY COURSE

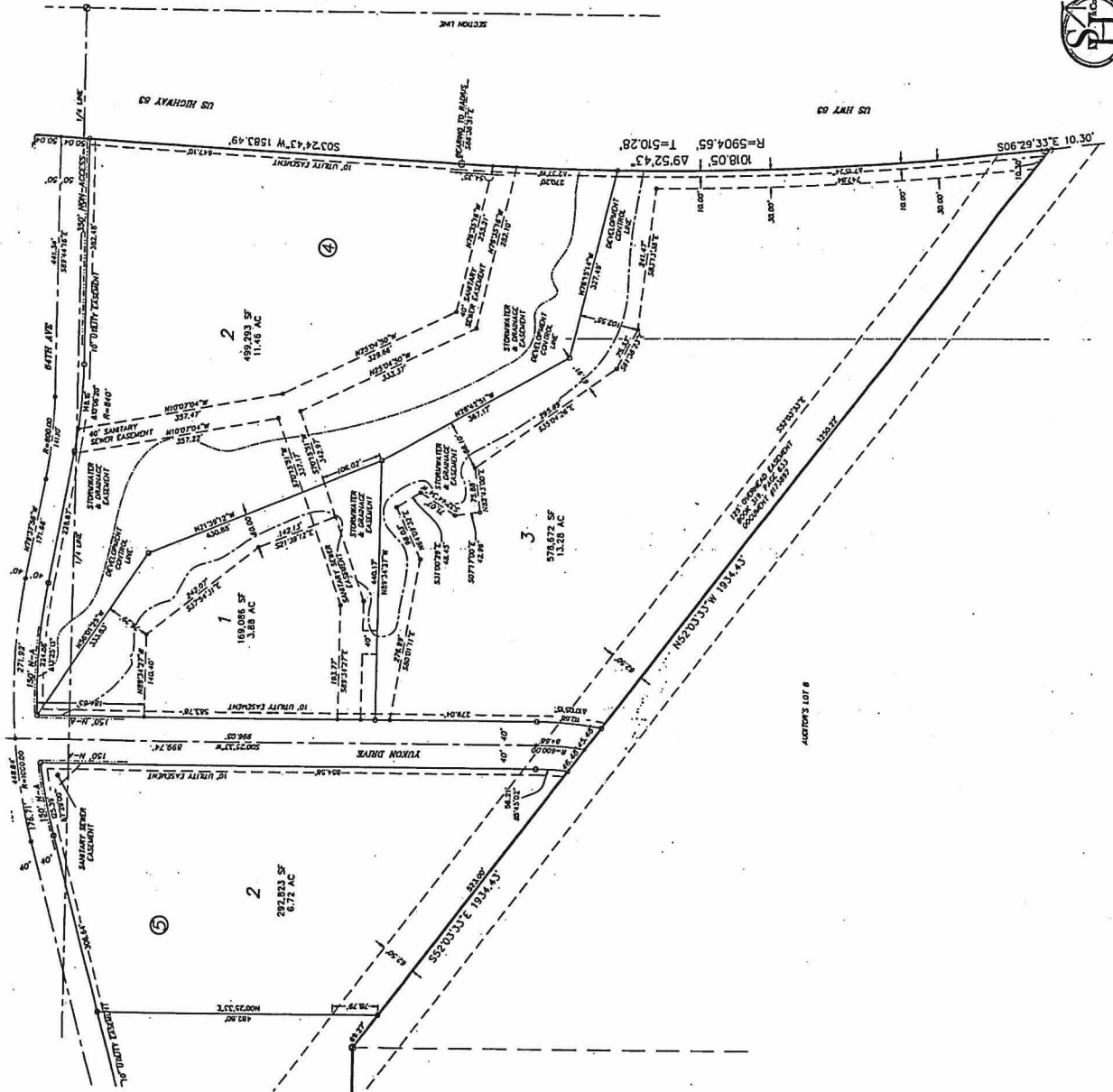
CONVENTIONAL DATA: NORTH DAKOTA SYSTEMATIC COORDINATE ADJUSTMENT OF THE UNITS ARE INTERNATIONAL FEET

BEARINGS AND DISTANCES MAY VARY FROM PREVIOUS PLATS BY SURVEY METHODS

VERTICAL DATUM: MEAN SEA LEVEL (MSL)

ELEVATION: 1114.6' (1900 2)

ROCKLAND DRIVE 7th NORTH OF 37th AVE



SWENSON, HAGEN & COMPANY P.C.

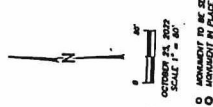
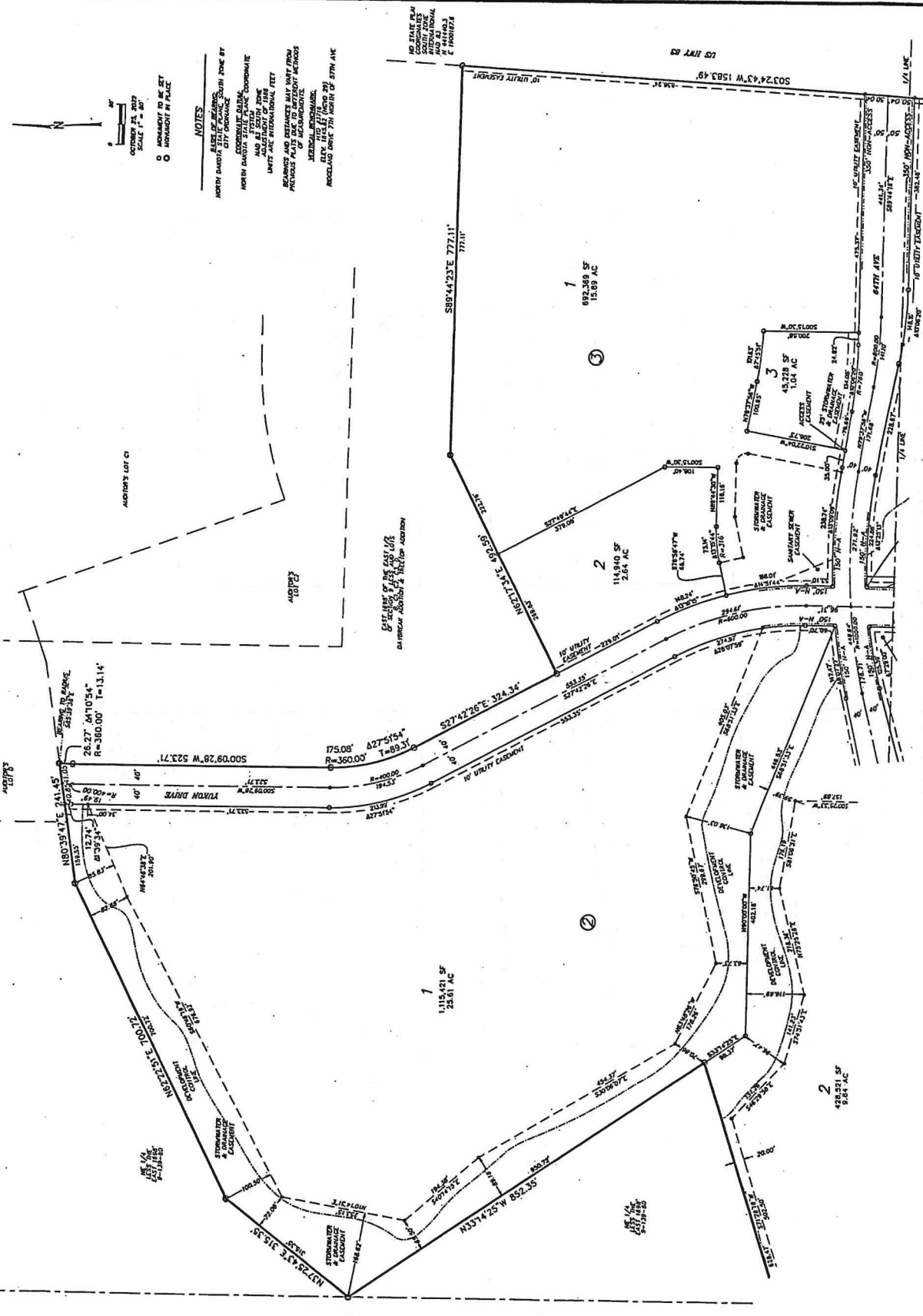
200 West 10th Street
Bismarck, North Dakota 58501
Phone: (701) 223-7000
Fax: (701) 223-7001
www.swhc.com

Professional Surveyors
Professional Engineers
Professional Geographers
Professional Land Surveyors

550406
1/11/2006
11:47 AM
1/11/2006
11:47 AM

DAYBREAK SECOND ADDITION

PART OF SECTION 9, TOWNSHIP 139 NORTH, RANGE 80 WEST
OF THE FIFTH PRINCIPAL MERIDIAN
BISMARCK, BURLEIGH COUNTY, NORTH DAKOTA



NOTES

1. THIS PLAT IS IN ACCORDANCE WITH THE NORTH DAKOTA STATE PLANNING ZONE BY-LAW, CHAPTER 15-02, N.D.A.C., WHICH PROVIDES FOR THE SUBDIVISION OF LAND INTO LOTS OF VARYING SIZES AND SHAPES FOR THE PURPOSES OF DEVELOPMENT AND CONSTRUCTION OF RESIDENTIAL UNITS.

2. THE PLAT IS SUBJECT TO ALL APPLICABLE ZONING ORDINANCES AND REGULATIONS.

3. THE PLAT IS SUBJECT TO ALL APPLICABLE UTILITY EASEMENTS AND RIGHTS-OF-WAY.

4. THE PLAT IS SUBJECT TO ALL APPLICABLE RECORDING REQUIREMENTS AND FEES.

5. THE PLAT IS SUBJECT TO ALL APPLICABLE RECORDING REQUIREMENTS AND FEES.

6. THE PLAT IS SUBJECT TO ALL APPLICABLE RECORDING REQUIREMENTS AND FEES.

SWENSON, HAGEN & COMPANY P.C.

Professional Land Surveyors

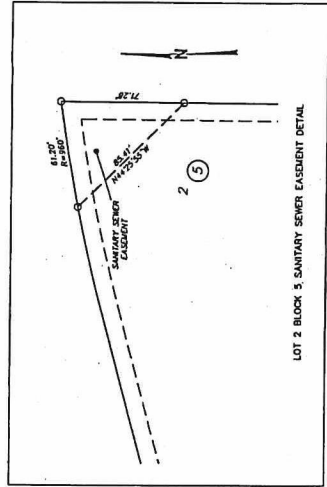
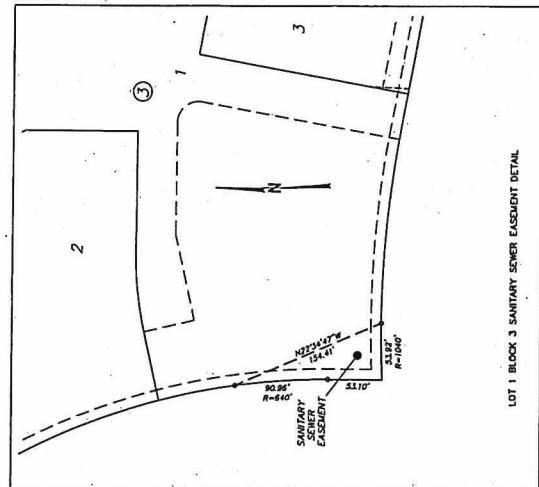
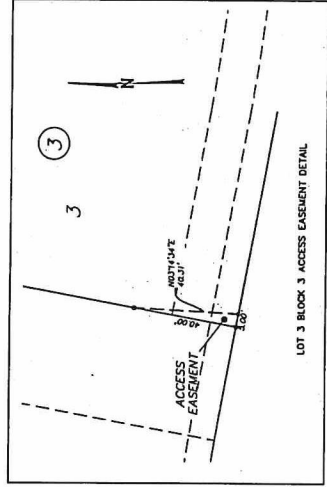
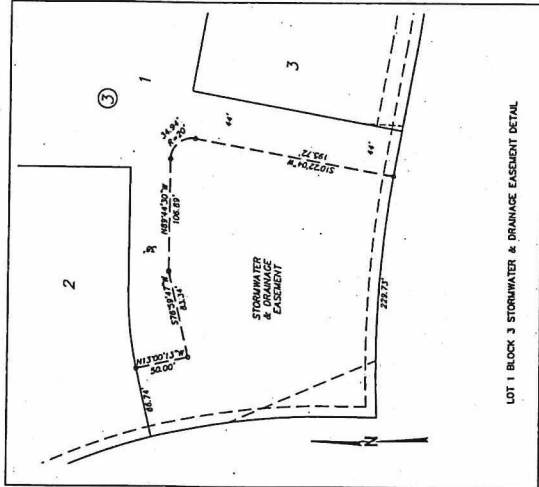
1000 14th Street, Suite 200
Bismarck, ND 58501
Phone: (701) 223-2200
Fax: (701) 223-2201

SWENSON, HAGEN & COMPANY P.C. is a member of the National Society of Professional Surveyors (NSPS).

550406
 11/11/2009
 11/11/2009

DAYBREAK SECOND ADDITION

PART OF SECTION 9, TOWNSHIP 139 NORTH, RANGE 80 WEST
 OF THE FIFTH PRINCIPAL MERIDIAN
 BISMARCK, BURLEIGH COUNTY, NORTH DAKOTA



SWENSON, HAGEN & COMPANY P.C.
 307 West Dakota Avenue
 Bismarck, North Dakota 58504
 Phone (701) 237-2000
 Fax (701) 237-2000
 www.swhc.com

Professional Engineer
 Licensed in North Dakota
 License No. 10000

Professional Surveyor
 Licensed in North Dakota
 License No. 10000