



787088 1017  
GRAND FORKS COUNTY Recorded: 10/15/2018 at 10:31 AM  
Return To: GRAND FORKS CITY

PO BOX 5200  
GRAND FORKS, ND 58206-5200



**787088** **\$75.00**  
RECORDER'S OFFICE, GRAND FORKS CO., ND 10/15/2018 at .  
I certify that this instrument was filed for record this date.  
GARLYNN HELMOSKI, County Recorder

AUDITOR'S  
COUNTY OF GRAND FORKS, NORTH DAKOTA

Oct 15 20 18

TRANSFER ENTERED

Maureen M. Storstad Auditor  
Deputy



BY Garlynn Helmoski

### CERTIFICATE

I, Maureen Storstad, city auditor for the city of Grand Forks, ND hereby certify the attached document to be a true and correct copy of Ordinance No. 4668, an ordinance TO ANNEX LANDS PLATTED AS CRARY'S NINTH ADDITION AS FOLLOWS:

A TRACT OF LAND LYING WITHIN THE WEST HALF OF THE SOUTHWEST QUARTER OF SECTION 27, TOWNSHIP 151 NORTH, RANGE 50 WEST OF THE FIFTH PRINCIPAL MERIDIAN, GRAND FORKS COUNTY, NORTH DAKOTA, MORE PARTICULARLY DESCRIBED AS;  
COMMENCING AT THE SOUTHWEST CORNER OF SAID SOUTHWEST QUARTER OF SECTION 27, THENCE NORTH 0°00'32" EAST, ON A PLATTED BEARING, ALONG THE WEST LINE OF SAID SOUTHWEST QUARTER A DISTANCE OF 739.07 FEET, THENCE SOUTH 89°57'21" EAST A DISTANCE OF 130.0 FEET, TO A POINT ON THE EAST RIGHT OF WAY LINE OF U.S. HIGHWAY 81 ALSO KNOWN AS SOUTH WASHINGTON STREET, AND ALSO BEING THE NORTHWEST CORNER OF THE JAY W. CARLSON TRACT AS DESCRIBED IN THE WARRANTY DEED AND OF RECORD WITH THE GRAND FORKS COUNTY RECORDER AS DOCUMENT NUMBER 414145. THENCE CONTINUING SOUTH 89°57'21" EAST, ALONG THE NORTH LINE OF SAID CARLSON TRACT, A DISTANCE OF 140.0 FEET, TO THE POINT OF BEGINNING; THENCE NORTH 0°00'32" EAST, 270.0 FEET EAST OF AND PARALLEL WITH THE WEST LINE OF SAID SOUTHWEST QUARTER, A DISTANCE OF 1080.76 FEET, TO A POINT 140.0 FEET SOUTH OF THE SOUTH RIGHT OF WAY LINE OF 57TH AVENUE SOUTH, THENCE NORTH 89°55'15" EAST, PARALLEL WITH SAID SOUTH RIGHT OF WAY LINE, A DISTANCE OF 228.59 FEET, THENCE SOUTH 0°00'32" WEST, A DISTANCE OF 336.79 FEET, THENCE NORTH 89°55'15" EAST, A DISTANCE OF 343.43 FEET, THENCE NORTH 0°00'32" EAST A DISTANCE OF 63.35 FEET, THENCE NORTH 89°55'15" EAST, A DISTANCE OF 111.11 FEET, THENCE SOUTH 60°15'11" WEST, A DISTANCE OF 127.98 FEET, THENCE SOUTH 0°00'32" WEST, ALONG THE EAST LINE OF BLOCK 2, OF CRARY'S NINTH ADDITION TO THE CITY OF GRAND FORKS, AND ITS SOUTHERLY EXTENSION, A DISTANCE OF 953.22 FEET, THENCE NORTHWESTERLY ALONG A CURVE CONCAVE TO THE NORTHEAST, 140 FEET SOUTH OF AND PARALLEL WITH THE SOUTH LINE OF 60TH



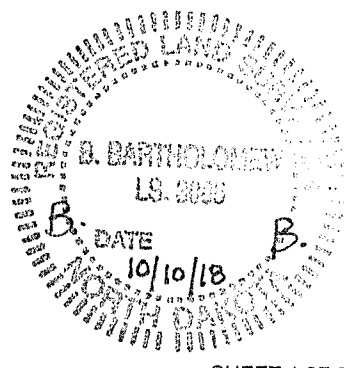
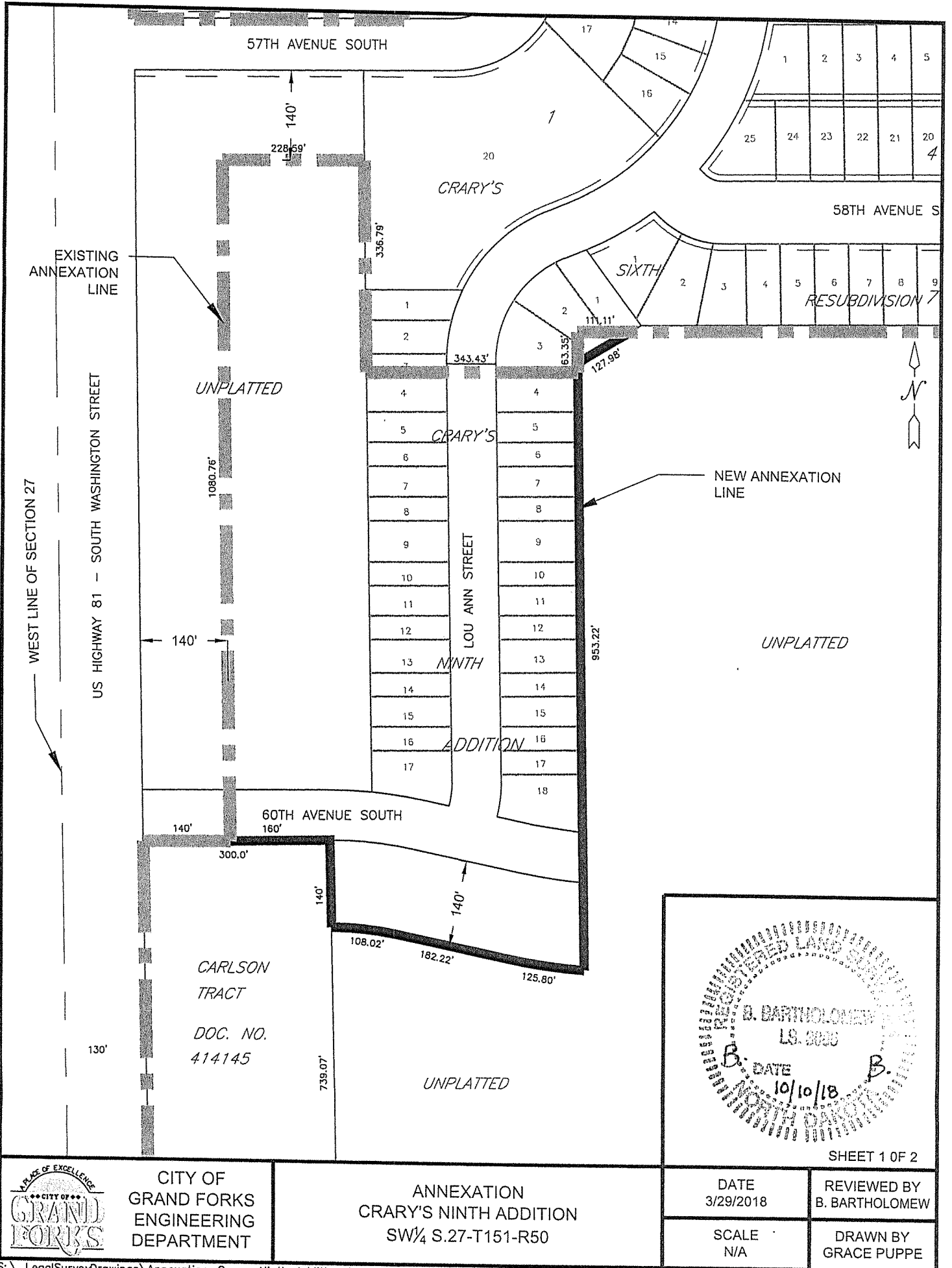
787088 3 of 7

GRAND FORKS COUNTY Recorded: 10/15/2018 at 10:31 AM

Return To: GRAND FORKS CITY

PO BOX 5200

GRAND FORKS, ND 58206-5200



SHEET 1 OF 2



CITY OF  
GRAND FORKS  
ENGINEERING  
DEPARTMENT

ANNEXATION  
CRARY'S NINTH ADDITION  
SW¼ S.27-T151-R50

DATE  
3/29/2018

REVIEWED BY  
B. BARTHOLOMEW

SCALE  
N/A

DRAWN BY  
GRACE PUPPE

**ANNEXATION -**

A TRACT OF LAND LYING WITHIN THE WEST HALF OF THE SOUTHWEST QUARTER OF SECTION 27, TOWNSHIP 151 NORTH, RANGE 50 WEST OF THE FIFTH PRINCIPAL MERIDIAN, GRAND FORKS COUNTY, NORTH DAKOTA, MORE PARTICULARLY DESCRIBED AS;

COMMENCING AT THE SOUTHWEST CORNER OF SAID SOUTHWEST QUARTER OF SECTION 27, THENCE NORTH 0°00'32" EAST, ON A PLATTED BEARING, ALONG THE WEST LINE OF SAID SOUTHWEST QUARTER A DISTANCE OF 739.07 FEET, THENCE SOUTH 89°57'21" EAST A DISTANCE OF 130.0 FEET, TO A POINT ON THE EAST RIGHT OF WAY LINE OF U.S. HIGHWAY 81 ALSO KNOWN AS SOUTH WASHINGTON STREET, AND ALSO BEING THE NORTHWEST CORNER OF THE JAY W. CARLSON TRACT AS DESCRIBED IN THE WARRANTY DEED AND OF RECORD WITH THE GRAND FORKS COUNTY RECORDER AS DOCUMENT NUMBER 414145. THENCE CONTINUING SOUTH 89°57'21" EAST, ALONG THE NORTH LINE OF SAID CARLSON TRACT, A DISTANCE OF 140.0 FEET, TO THE POINT OF BEGINNING; THENCE NORTH 0°00'32" EAST, 270.0 FEET EAST OF AND PARALLEL WITH THE WEST LINE OF SAID SOUTHWEST QUARTER, A DISTANCE OF 1080.76 FEET, TO A POINT 140.0 FEET SOUTH OF THE SOUTH RIGHT OF WAY LINE OF 57TH AVENUE SOUTH, THENCE NORTH 89°55'15" EAST, PARALLEL WITH SAID SOUTH RIGHT OF WAY LINE, A DISTANCE OF 228.59 FEET, THENCE SOUTH 0°00'32" WEST, A DISTANCE OF 336.79 FEET, THENCE NORTH 89°55'15" EAST, A DISTANCE OF 343.43 FEET, THENCE NORTH 0°00'32" EAST A DISTANCE OF 63.35 FEET, THENCE NORTH 89°55'15" EAST, A DISTANCE OF 111.11 FEET, THENCE SOUTH 60°15'11" WEST, A DISTANCE OF 127.98 FEET, THENCE SOUTH 0°00'32" WEST, ALONG THE EAST LINE OF BLOCK 2, OF CRARY'S NINTH ADDITION TO THE CITY OF GRAND FORKS, AND ITS SOUTHERLY EXTENSION, A DISTANCE OF 953.22 FEET, THENCE NORTHWESTERLY ALONG A CURVE CONCAVE TO THE NORTHEAST, 140 FEET SOUTH OF AND PARALLEL WITH THE SOUTH LINE OF 60TH AVENUE SOUTH, WITH AN INTERIOR ANGLE OF 7°45'01", A LENGTH OF 125.80 FEET AND A RADIUS OF 930.0 FEET, THENCE CONTINUING NORTH 77°31'08" WEST, 140 FEET SOUTH OF AND PARALLEL WITH SAID SOUTH LINE OF 60TH AVENUE SOUTH, A DISTANCE OF 182.22 FEET, THENCE CONTINUING NORTHWESTERLY 140 FEET SOUTH OF AND PARALLEL WITH SAID SOUTH LINE OF 60TH AVENUE SOUTH, ALONG A CURVE, CONCAVE TO THE SOUTH WITH AND INTERIOR ANGLE OF 12°29'24", A LENGTH OF 108.02 AND A RADIUS OF 495.54 FEET TO A POINT ON THE EAST LINE OF SAID JAY CARLSON TRACT, THENCE NORTH 0°00'32" EAST ALONG SAID CARLSON TRACT EAST LINE A DISTANCE OF 140.0 FEET, TO THE NORTHEAST CORNER OF SAID CARLSON TRACT AND THE SOUTH LINE OF 60TH AVENUE SOUTH, THENCE NORTH 89°57'21" WEST, ALONG THE NORTH LINE OF SAID CARLSON TRACT AND THE SOUTH LINE OF 60TH AVENUE SOUTH, BEING ONE AND THE SAME, A DISTANCE OF 160 FEET TO THE POINT OF BEGINNING. SAID TRACT OF LAND CONTAINING ALL OF CRARY'S NINTH ADDITION TO THE CITY OF GRAND FORKS, NORTH DAKOTA AND SOME UNPLATTED PARTS OF THE SOUTHWEST QUARTER OF SECTION 27, TOWNSHIP 151 NORTH, RANGE 50 WEST OF THE FIFTH PRINCIPAL MERIDIAN, GRAND FORKS COUNTY, NORTH DAKOTA, NOT PREVIOUSLY ANNEXED. THE TOTAL ANNEXED AREA OF SAID TRACT OF LAND IS EQUAL TO 564,716.48 SQUARE FEET OR 12.96 ACRES, MORE OR LESS.

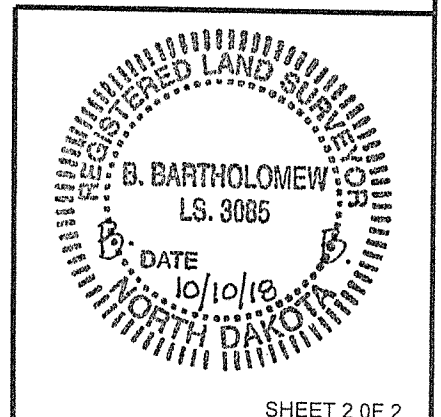
**787088 4 of 7**

GRAND FORKS COUNTY Recorded: 10/15/2018 at 10:31 AM


Return To: GRAND FORKS CITY

PO BOX 5200

GRAND FORKS, ND 58206-5200



SHEET 2 OF 2

	CITY OF GRAND FORKS ENGINEERING DEPARTMENT	ANNEXATION CRARY'S NINTH ADDITION	DATE 3/29/2018	REVIEWED BY B. BARTHOLOMEW
			SCALE N/A	DRAWN BY GRACE PUPPE

ORDINANCE NO. 4668

AN ORDINANCE TO ANNEX LANDS PLATTED AS CRARY'S NINTH ADDITION AS FOLLOWS:

A TRACT OF LAND LYING WITHIN THE WEST HALF OF THE SOUTHWEST QUARTER OF SECTION 27, TOWNSHIP 151 NORTH, RANGE 50 WEST OF THE FIFTH PRINCIPAL MERIDIAN, GRAND FORKS COUNTY, NORTH DAKOTA, MORE PARTICULARLY DESCRIBED AS;

COMMENCING AT THE SOUTHWEST CORNER OF SAID SOUTHWEST QUARTER OF SECTION 27, THENCE NORTH 0°00'32" EAST, ON A PLATTED BEARING, ALONG THE WEST LINE OF SAID SOUTHWEST QUARTER A DISTANCE OF 739.07 FEET, THENCE SOUTH 89°57'21" EAST A DISTANCE OF 130.0 FEET, TO A POINT ON THE EAST RIGHT OF WAY LINE OF U.S. HIGHWAY 81 ALSO KNOWN AS SOUTH WASHINGTON STREET, AND ALSO BEING THE NORTHWEST CORNER OF THE JAY W. CARLSON TRACT AS DESCRIBED IN THE WARRANTY DEED AND OF RECORD WITH THE GRAND FORKS COUNTY RECORDER AS DOCUMENT NUMBER 414145. THENCE CONTINUING SOUTH 89°57'21" EAST, ALONG THE NORTH LINE OF SAID CARLSON TRACT, A DISTANCE OF 140.0 FEET, TO THE POINT OF BEGINNING; THENCE NORTH 0°00'32" EAST, 270.0 FEET EAST OF AND PARALLEL WITH THE WEST LINE OF SAID SOUTHWEST QUARTER, A DISTANCE OF 1080.76 FEET, TO A POINT 140.0 FEET SOUTH OF THE SOUTH RIGHT OF WAY LINE OF 57TH AVENUE SOUTH, THENCE NORTH 89°55'15" EAST, PARALLEL WITH SAID SOUTH RIGHT OF WAY LINE, A DISTANCE OF 228.59 FEET, THENCE SOUTH 0°00'32" WEST, A DISTANCE OF 336.79 FEET, THENCE NORTH 89°55'15" EAST, A DISTANCE OF 343.43 FEET, THENCE NORTH 0°00'32" EAST A DISTANCE OF 63.35 FEET, THENCE NORTH 89°55'15" EAST, A DISTANCE OF 111.11 FEET, THENCE SOUTH 60°15'11" WEST, A DISTANCE OF 127.98 FEET, THENCE SOUTH 0°00'32" WEST, ALONG THE EAST LINE OF BLOCK 2, OF CRARY'S NINTH ADDITION TO THE CITY OF GRAND FORKS, AND ITS SOUTHERLY EXTENSION, A DISTANCE OF 953.22 FEET, THENCE NORTHWESTERLY ALONG A CURVE CONCAVE TO THE NORTHEAST, 140 FEET SOUTH OF AND PARALLEL WITH THE SOUTH LINE OF 60TH AVENUE SOUTH, WITH AN INTERIOR ANGLE OF 7°45'01", A LENGTH OF 125.80 FEET AND A RADIUS OF 930.0 FEET, THENCE CONTINUING NORTH 77°31'08" WEST, 140 FEET SOUTH OF AND PARALLEL WITH SAID SOUTH LINE OF 60TH AVENUE SOUTH, A DISTANCE OF 182.22 FEET, THENCE CONTINUING NORTHWESTERLY 140 FEET SOUTH OF AND PARALLEL WITH SAID SOUTH LINE OF 60TH AVENUE SOUTH, ALONG A CURVE, CONCAVE TO THE SOUTH WITH AND INTERIOR ANGLE OF 12°29'24", A LENGTH OF 108.02 AND A RADIUS OF 495.54 FEET TO A POINT ON THE EAST LINE OF SAID JAY CARLSON TRACT, THENCE NORTH 0°00'32" EAST ALONG SAID CARLSON TRACT EAST LINE A DISTANCE OF 140.0 FEET, TO THE NORTHEAST CORNER OF SAID CARLSON TRACT AND THE SOUTH LINE OF 60TH AVENUE SOUTH, THENCE NORTH 89°57'21" WEST, ALONG THE NORTH LINE OF SAID CARLSON TRACT AND THE SOUTH LINE OF 60TH AVENUE SOUTH, BEING ON AND THE SAME, A DISTANCE OF 160 FEET TO THE POINT OF BEGINNING. SAID TRACT OF LAND CONTAINING ALL OF CRARY'S NINTH ADDITION TO THE CITY OF GRAND FORKS, NORTH DAKOTA AND SOME UNPLATTED PARTS OF THE SOUTHWEST QUARTER OF SECTION 27, TOWNSHIP 151 NORTH, RANGE 50 WEST OF THE FIFTH PRINCIPAL MERIDIAN, GRAND FORKS COUNTY, NORTH DAKOTA, NOT PREVIOUSLY ANNEXED. THE TOTAL ANNEXED AREA OF SAID TRACT OF LAND IS EQUAL TO 564,716.48 SQUARE FEET OR 12.96 ACRES, MORE OR LESS.

787088 5 of 7

GRAND FORKS COUNTY Recorded: 10/15/2018 at 10:31 AM  
Return To: GRAND FORKS CITY

PO BOX 5200

GRAND FORKS, ND 58206-5200



Section 1.

The following territory is hereby annexed to the City of Grand Forks, North Dakota, together with the full width of all platted streets and public rights-of-way contiguous thereto:

ANNEX LANDS PLATTED AS CRARY'S NINTH ADDITION AS FOLLOWS:

A TRACT OF LAND LYING WITHIN THE WEST HALF OF THE SOUTHWEST QUARTER OF SECTION 27, TOWNSHIP 151 NORTH, RANGE 50 WEST OF THE FIFTH PRINCIPAL MERIDIAN, GRAND FORKS COUNTY, NORTH DAKOTA, MORE PARTICULARLY DESCRIBED AS;

COMMENCING AT THE SOUTHWEST CORNER OF SAID SOUTHWEST QUARTER OF SECTION 27, THENCE NORTH 0°00'32" EAST, ON A PLATTED BEARING, ALONG THE WEST LINE OF SAID SOUTHWEST QUARTER A DISTANCE OF 739.07 FEET, THENCE SOUTH 89°57'21" EAST A DISTANCE OF 130.0 FEET, TO A POINT ON THE EAST RIGHT OF WAY LINE OF U.S. HIGHWAY 81 ALSO KNOWN AS SOUTH WASHINGTON STREET, AND ALSO BEING THE NORTHWEST CORNER OF THE JAY W. CARLSON TRACT AS DESCRIBED IN THE WARRANTY DEED AND OF RECORD WITH THE GRAND FORKS COUNTY RECORDER AS DOCUMENT NUMBER 414145. THENCE CONTINUING SOUTH 89°57'21" EAST, ALONG THE NORTH LINE OF SAID CARLSON TRACT, A DISTANCE OF 140.0 FEET, TO THE POINT OF BEGINNING; THENCE NORTH 0°00'32" EAST, 270.0 FEET EAST OF AND PARALLEL WITH THE WEST LINE OF SAID SOUTHWEST QUARTER, A DISTANCE OF 1080.76 FEET, TO A POINT 140.0 FEET SOUTH OF THE SOUTH RIGHT OF WAY LINE OF 57TH AVENUE SOUTH, THENCE NORTH 89°55'15" EAST, PARALLEL WITH SAID SOUTH RIGHT OF WAY LINE, A DISTANCE OF 228.59 FEET, THENCE SOUTH 0°00'32" WEST, A DISTANCE OF 336.79 FEET, THENCE NORTH 89°55'15" EAST, A DISTANCE OF 343.43 FEET, THENCE NORTH 0°00'32" EAST A DISTANCE OF 63.35 FEET, THENCE NORTH 89°55'15" EAST, A DISTANCE OF 111.11 FEET, THENCE SOUTH 60°15'11" WEST, A DISTANCE OF 127.98 FEET, THENCE SOUTH 0°00'32" WEST, ALONG THE EAST LINE OF BLOCK 2, OF CRARY'S NINTH ADDITION TO THE CITY OF GRAND FORKS, AND ITS SOUTHERLY EXTENSION, A DISTANCE OF 953.22 FEET, THENCE NORTHWESTERLY ALONG A CURVE CONCAVE TO THE NORTHEAST, 140 FEET SOUTH OF AND PARALLEL WITH THE SOUTH LINE OF 60TH AVENUE SOUTH, WITH AN INTERIOR ANGLE OF 7°45'01", A LENGTH OF 125.80 FEET AND A RADIUS OF 930.0 FEET, THENCE CONTINUING NORTH 77°31'08" WEST, 140 FEET SOUTH OF AND PARALLEL WITH SAID SOUTH LINE OF 60TH AVENUE SOUTH, A DISTANCE OF 182.22 FEET, THENCE CONTINUING NORTHWESTERLY 140 FEET SOUTH OF AND PARALLEL WITH SAID SOUTH LINE OF 60TH AVENUE SOUTH, ALONG A CURVE, CONCAVE TO THE SOUTH WITH AND INTERIOR ANGLE OF 12°29'24", A LENGTH OF 108.02 AND A RADIUS OF 495.54 FEET TO A POINT ON THE EAST LINE OF SAID JAY CARLSON TRACT, THENCE NORTH 0°00'32" EAST ALONG SAID CARLSON TRACT EAST LINE A DISTANCE OF 140.0 FEET, TO THE NORTHEAST CORNER OF SAID CARLSON TRACT AND THE SOUTH LINE OF 60TH AVENUE SOUTH, THENCE NORTH 89°57'21" WEST, ALONG THE NORTH LINE OF SAID CARLSON TRACT AND THE SOUTH LINE OF 60TH AVENUE SOUTH, BEING ON AND THE SAME, A DISTANCE OF 160 FEET TO THE POINT OF BEGINNING. SAID TRACT OF LAND CONTAINING ALL OF CRARY'S NINTH ADDITION TO THE CITY OF GRAND FORKS, NORTH DAKOTA AND SOME UNPLATTED PARTS OF THE SOUTHWEST QUARTER OF SECTION 27, TOWNSHIP 151 NORTH, RANGE 50 WEST OF THE FIFTH PRINCIPAL MERIDIAN, GRAND FORKS COUNTY, NORTH DAKOTA, NOT PREVIOUSLY ANNEXED. THE TOTAL ANNEXED AREA OF SAID TRACT OF LAND IS EQUAL TO 564,716.48 SQUARE FEET OR 12.96 ACRES, MORE OR LESS.

**787088 6 of 7**

GRAND FORKS COUNTY Recorded: 10/15/2018 at 10:31 AM  
Return To: GRAND FORKS CITY

PO BOX 5200

GRAND FORKS, ND 58206-5200

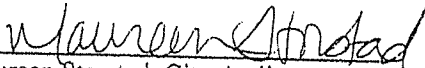


Section 2.

This ordinance shall be in full force and effect after its passage and approval as provided by law.

  
Michael R. Brown, Mayor

ATTEST:

  
Maureen Storstad, City Auditor

Introduction and first reading: 04/16/2018  
Public Hearing: 05/21/2018  
Second reading and final passage: 05/21/2018  
Approved: 05/21/2018  
Published: Not required by law.  
Recorded:

**787088 7 of 7**

GRAND FORKS COUNTY Recorded: 10/15/2018 at 10:31 AM  
Return To: GRAND FORKS CITY

PO BOX 5200

GRAND FORKS, ND 58206-5200

