



ORDINANCE NO. 6325

<i>First Reading</i>	<u>May 8, 2018</u>
<i>Second Reading</i>	<u>May 22, 2018</u>
<i>Final Passage and Adoption</i>	<u>May 22, 2018</u>
<i>Publication Date</i>	<u>May 12 & 19, 2018</u>

AN ORDINANCE ANNEXING PROPERTY TO THE CORPORATE LIMITS OF THE CITY OF BISMARCK, NORTH DAKOTA, DECLARING THE TERRITORY ANNEXED; DECLARING THE SAME TO BE A PART OF THE CORPORATE LIMITS OF SAID CITY.

BE IT ORDAINED BY THE BOARD OF CITY COMMISSIONERS OF THE CITY OF BISMARCK, NORTH DAKOTA.

Section 1. Territory Annexed. The territory and land hereinafter described is hereby declared and found to be a part of the corporate limits of the City of Bismarck, North Dakota, as follows:

Lot 1, Block 1, Hamburg Industrial Park Third Addition.

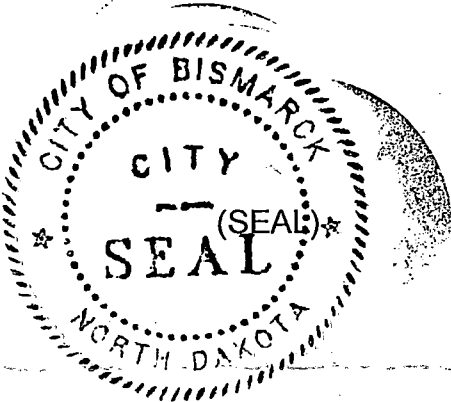
The above described tract of land contains 13.57 acres, more or less.

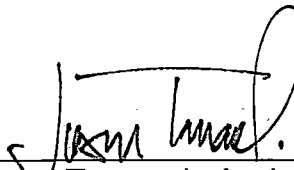
Section 2. Provisions Applicable. From and after the final passage and adoption of this Ordinance and upon recording of this ordinance with the Burleigh County Recorder, the territory herein described shall be a part of the corporate limits of the City of Bismarck, North Dakota.

STATE OF NORTH DAKOTA)
)
COUNTY OF BURLEIGH)

I, Jason Tomanek, do hereby certify that I am the duly appointed, qualified Assistant City Administrator of the City of Bismarck, North Dakota and that the foregoing is a full, true and correct copy of an ordinance adopted by the Board of City Commissioners at its regular meeting of May 22, 2018.

IN WITNESS WHEREOF, I have hereunto set my hand and the seal of the City of Bismarck, North Dakota, this 23rd day of May, 2018.





Jason Tomanek, Assistant City Administrator

HAMBURG INDUSTRIAL PARK THIRD ADDITION

BEING PART OF AUDITOR'S LOT B AND
PART OF AUDITOR'S LOT C
OF THE SW 1/4 OF
SECTION 13, TOWNSHIP 138 NORTH, RANGE 80 WEST

BISMARCK, BURLEIGH COUNTY, NORTH DAKOTA

DESCRIPTION

BEING PART OF AUDITOR'S LOT B AND PART OF AUDITOR'S LOT C OF THE SW 1/4 OF SECTION 13, TOWNSHIP 138 NORTH, RANGE 80 WEST, BISMARCK, BURLEIGH COUNTY, DESCRIBED AS FOLLOWS:

BEGINNING AT THE NORTHEAST CORNER OF LOT 3 BLOCK 1 HAMBURG INDUSTRIAL PARK SECOND ADDITION THENCE SOUTH 89 DEGREES 44 MINUTES 46 SECONDS EAST, ALONG THE NORTH LINE OF SAID SW 1/4 AND SAID LOT B, A DISTANCE OF 1133.10 FEET TO A LINE 20.00 FEET WEST OF AND PARALLEL WITH THE EAST LINE OF SAID LOT B; THENCE SOUTH 08 DEGREES 52 MINUTES 01 SECOND EAST, PARALLEL WITH SAID EAST LINE, A DISTANCE OF 130.43 FEET; THENCE SOUTH 91 DEGREES 01 MINUTES 58 SECONDS WEST, PERPENDICULAR TO SAID EAST LINE, A DISTANCE OF 200.00 FEET; THENCE SOUTH 08 DEGREES 52 MINUTES 01 SECOND EAST, PARALLEL TO SAID EAST LINE, A DISTANCE OF 350.00 FEET TO THE NORTH LINE OF AUDITOR'S LOT B; THENCE NORTH 89 DEGREES 44 MINUTES 46 SECONDS WEST, ALONG SAID NORTH LINE, A DISTANCE OF 889.37 FEET; THENCE SOUTHWESTERLY AND TO THE NORTH, ON A 1250 FOOT RADIUS CURVE, THE RADIOS OF WHICH BEARS NORTH 89 DEGREES 45 MINUTES 02 SECONDS WEST, AN ARC LENGTH OF 151.31 FEET TO THE EAST LINE OF HAMBURG INDUSTRIAL PARK SECOND ADDITION; THENCE NORTH 30 DEGREES 31 MINUTES 29 SECONDS EAST, ALONG SAID EAST LINE, A DISTANCE OF 82.48 FEET; THENCE NORTH 00 DEGREES 15 MINUTES 14 SECONDS EAST, ALONG SAID EAST LINE, A DISTANCE OF 3100 FEET TO THE POINT OF BEGINNING.

THE ABOVE DESCRIBED TRACT CONTAINS 1.57 ACRES, MORE OR LESS.

SURVEYOR'S CERTIFICATE

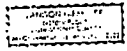
I, TERRY BALTZER, A REGISTERED LAND SURVEYOR IN THE STATE OF NORTH DAKOTA, HEREBY CERTIFY THAT THE PLAT SHOWN HEREON IS A TRUE COPY OF THE NOTES OF A SURVEY PERFORMED UNDER MY SUPERVISION AND COMPLETED ON MAY 11, 2018. THAT ALL INFORMATION SHOWN HEREON IS TRUE AND CORRECT TO THE BEST OF MY KNOWLEDGE AND BELIEF; THAT ALL MONUMENTS SHOWN HEREON ARE CORRECT; THAT ALL REQUIRED MONUMENTS HAVE BEEN SET; AND THAT ALL DIMENSIONAL AND GEODETIC DETAILS ARE CORRECT.



STATE OF NORTH DAKOTA)
COUNTY OF BURLEIGH)
SWENSON, HAGEN & CO P.C.
809 BISMAR AVENUE
BISMARCK, NORTH DAKOTA
58504

TERRY BALTZER
PROFESSIONAL LAND SURVEYOR
REG. REGISTRATION NO. 40350
NOTARY PUBLIC
BURLEIGH COUNTY, NORTH DAKOTA
MY COMMISSION EXPIRES 12-31-22

ON THIS 11th DAY OF MAY, 2018, BEFORE ME PERSONALLY APPEARED TERRY BALTZER, KNOWN TO ME TO BE THE PERSON DESCRIBED IN AND WHO EXECUTED THE FOREGOING SURVEYOR'S CERTIFICATE AND HE ACKNOWLEDGED TO ME THAT HE EXECUTED THE SAME.



APPROVAL OF CITY PLANNING COMMISSION
THE SUBDIVISION OF LAND AS SHOWN ON THE PLAT SHOWN HEREON HAS BEEN APPROVED BY THE PLANNING COMMISSION OF THE CITY OF BISMARCK, ON THE 20th DAY OF JUNE, 2018 IN ACCORDANCE WITH LAWS OF THE STATE OF NORTH DAKOTA. ORDINANCES OF THE CITY OF BISMARCK AND REGULATIONS ADOPTED BY THE SAID PLANNING COMMISSION, BY WITNESS WHEREOF ARE SETTING HANDS AND SEALS OF THE CHAIRMAN AND SECRETARY OF THE PLANNING COMMISSION OF THE CITY OF BISMARCK.

DOUGLAS H. LEE - CHAIRMAN
CARL D. NOKENSTAD - SECRETARY

APPROVAL OF BOARD OF CITY COMMISSIONERS
THE BOARD OF CITY COMMISSIONERS OF THE CITY OF BISMARCK, NORTH DAKOTA, HAS APPROVED THE SUBDIVISION OF LAND AS SHOWN ON THE PLAT SHOWN HEREON, HAS ACCEPTED THE DESIGNATION OF ALL STREETS SHOWN HEREON, HAS APPROVED THE GROUNDS AS SHOWN ON THE ANNEXED PLAT AS AN AMENDMENT TO THE MASTER PLAN OF THE CITY OF BISMARCK, NORTH DAKOTA, AND DOES HEREBY WAIVE ANY PREVIOUS PLATTING WITHIN THE BOUNDARY OF THE ANNEXED PLAT.

KEITH J. HUNNE - CITY ADMINISTRATOR

APPROVAL OF CITY ENGINEER
I, GABRIEL J. SCHWELL, CITY ENGINEER OF THE CITY OF BISMARCK, NORTH DAKOTA, HEREBY APPROVE "HAMBURG INDUSTRIAL PARK THIRD ADDITION", BISMARCK, NORTH DAKOTA AS SHOWN ON THE PLAT SHOWN HEREON.

GABRIEL J. SCHWELL
CITY ENGINEER

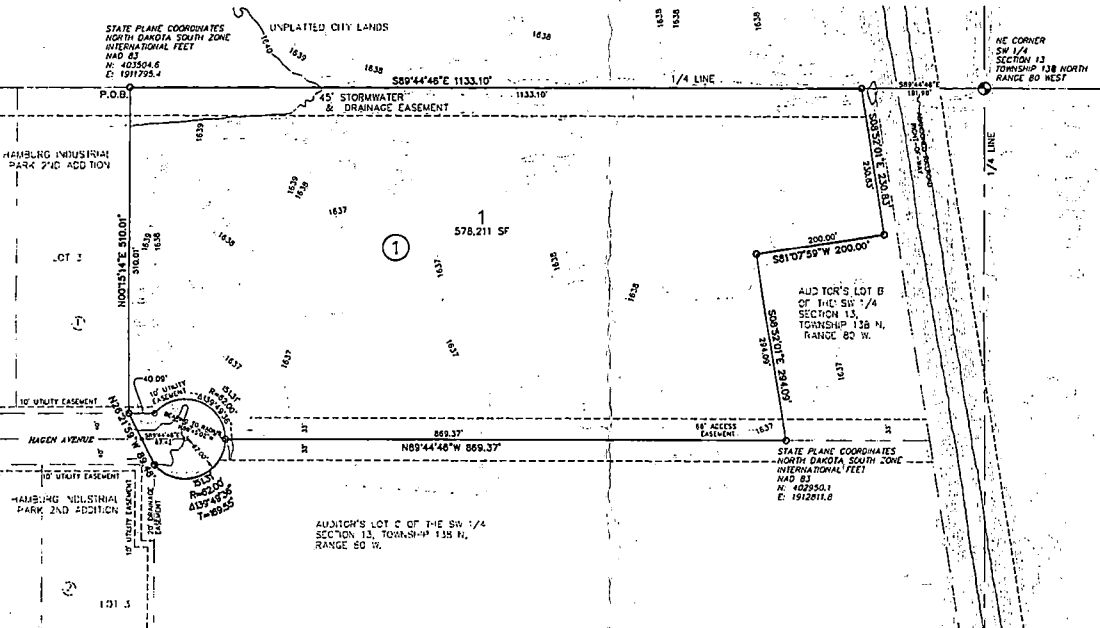
OWNER'S CERTIFICATE & DEDICATION
I, LANCE HAGEN, BEING THE OWNER AND PROPRIETOR OF THE PROPERTY SHOWN HEREON, HAVE CAUSED THAT PORTION DESCRIBED HEREON TO BE SURVEYED AND PLATTED AS "HAMBURG INDUSTRIAL PARK THIRD ADDITION", BISMARCK, NORTH DAKOTA, AND DOES SO DEDICATE STREETS AS SHOWN HEREON INCLUDING ALL SEWER, CULVERTS, WATER AND OTHER PUBLIC UTILITY LINES WHETHER SHOWN HEREON OR NOT TO THE PUBLIC USE FOREVER.

HE ALSO DEDICATES EASEMENTS TO THE CITY OF BISMARCK TO RUN WITH THE LAND, FOR GAS, ELECTRIC, TELEPHONE OR OTHER PUBLIC UTILITIES OR SERVICES ON OR UNDER THOSE CERTAIN STRIPS OF LAND DESIGNATED HEREON AS UTILITY EASEMENTS.

STATE OF NORTH DAKOTA)
COUNTY OF BURLEIGH)
LANCE HAGEN
3118 WILSON ROAD
BISMARCK, N.D. 58504

ON THIS 18th DAY OF MAY, 2018, BEFORE ME PERSONALLY APPEARED LANCE HAGEN, KNOWN TO ME TO BE THE PERSON DESCRIBED IN AND WHO EXECUTED THE FOREGOING CERTIFICATE AND HE ACKNOWLEDGED TO ME THAT HE EXECUTED THE SAME.

DOUGLAS H. LEE
NOTARY PUBLIC
BURLEIGH COUNTY, NORTH DAKOTA
MY COMMISSION EXPIRES 12-31-22



NOTES
BASIS OF BEARING:
NORTH DAKOTA STATE PLANE, SOUTH ZONE BY
CITY ORDINANCE.

COORDINATE DATUM:
NORTH DAKOTA STATE PLANE COORDINATE
SYSTEM
NAD 83 SOUTH ZONE
ADJUSTMENT OF 1986
UNITS ARE INTERNATIONAL FEET

BEARINGS AND DISTANCES MAY VARY FROM
PREVIOUS PLATS DUE TO DIFFERENT METHODS
OF MEASUREMENTS.

VERTICAL BENCHMARK:
PIKMAN 4356
HAGEN AVENUE 3/8 EAST OF YEGEN ROAD
ELEV: 1645.17 (NAVD 88)

FLOOD PLAIN
FROM MAP PANEL NUMBER: 38015C08150
100-YR FLOOD PLAN ELEVATION: 1641.8 (NAVD 88)

AREA DATA

1013	578,211 SF	13,337 ACRES
1014	200,000 SF	4,574 ACRES
1015	21,765 SF	0.500 ACRES

