

ORDINANCE NO. 6303

<i>First Reading</i>	<u>January 9, 2018</u>
<i>Second Reading</i>	<u>January 23, 2018</u>
<i>Final Passage and Adoption</i>	<u>January 23, 2018</u>
<i>Publication Date</i>	<u>January 12 & 19, 2018</u>

AN ORDINANCE ANNEXING PROPERTY TO THE CORPORATE LIMITS OF THE CITY OF BISMARCK, NORTH DAKOTA, DECLARING THE TERRITORY ANNEXED; ~~DECLARING THE SAME TO BE A PART OF THE CORPORATE LIMITS OF SAID CITY.~~

BE IT ORDAINED BY THE BOARD OF CITY COMMISSIONERS OF THE CITY OF BISMARCK, NORTH DAKOTA.

Section 1. Territory Annexed. The territory and land hereinafter described is hereby declared and found to be a part of the corporate limits of the City of Bismarck, North Dakota, as follows:

Lot 1, Block 1, Lots 22-39, Block 2, Lots 1-16, Block 3, Lots 1-35, Block 4, Lots 1 and 17-18, Block 5, Lots 1-2 and 21, Block 7, Lots 2-7, Block 8, Lots 13-14, Block 9, Lots 13-26, Block 10, Lots 1-26, Block 11, Lots 1-26, Block 12, Lots 1-10, Block 13, Silver Ranch First Addition and the 43rd Avenue NE right of way between the centerline of Roosevelt Drive and the eastern boundary of Lot 1, Block 1, Silver Ranch First Addition, more precisely described as the South 33 feet of the SE ¼ of Section 13, T139N-R80W/Hay Creek Township, the North 33 feet of the NE ¼ of Section 24, T139N-R80W/Hay Creek Township lying East of the eastern boundary of Sattler Sunrise Seventh Addition, the West 1,723.09 feet of the South 75 feet of the SW ¼ of Section 18, T139N-R79W/Gibbs Township included in Document #845385, the North 60 feet of the NW ¼ of Section 19, T139N-R79W/Gibbs Township West of the western boundary of Huber Subdivision included in Document #539335 and the North 60 feet of Huber Subdivision shown as right-of-way in the NW ¼ of Section 19, T139N-R79W/Gibbs Township, and the North 75 feet of Huber Second Subdivision dedicated as 43rd Avenue NE in the NW ¼ of Section 19, T139N-R79W/Gibbs Township.

The above described tract of land contains 73.04 acres, more or less.

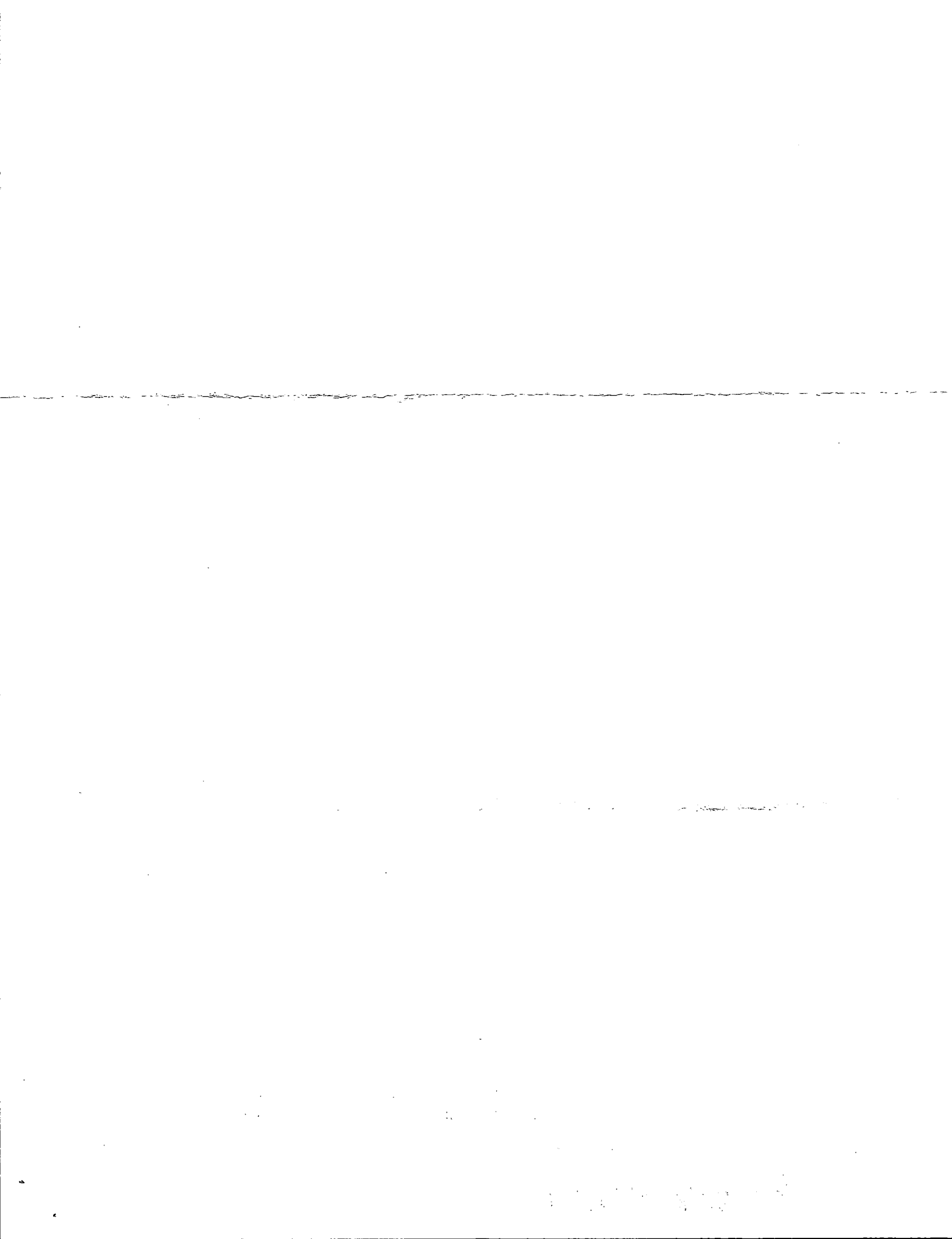
Section 2. Provisions Applicable. From and after the final passage and adoption of this Ordinance and upon recording of this ordinance with the Burleigh County

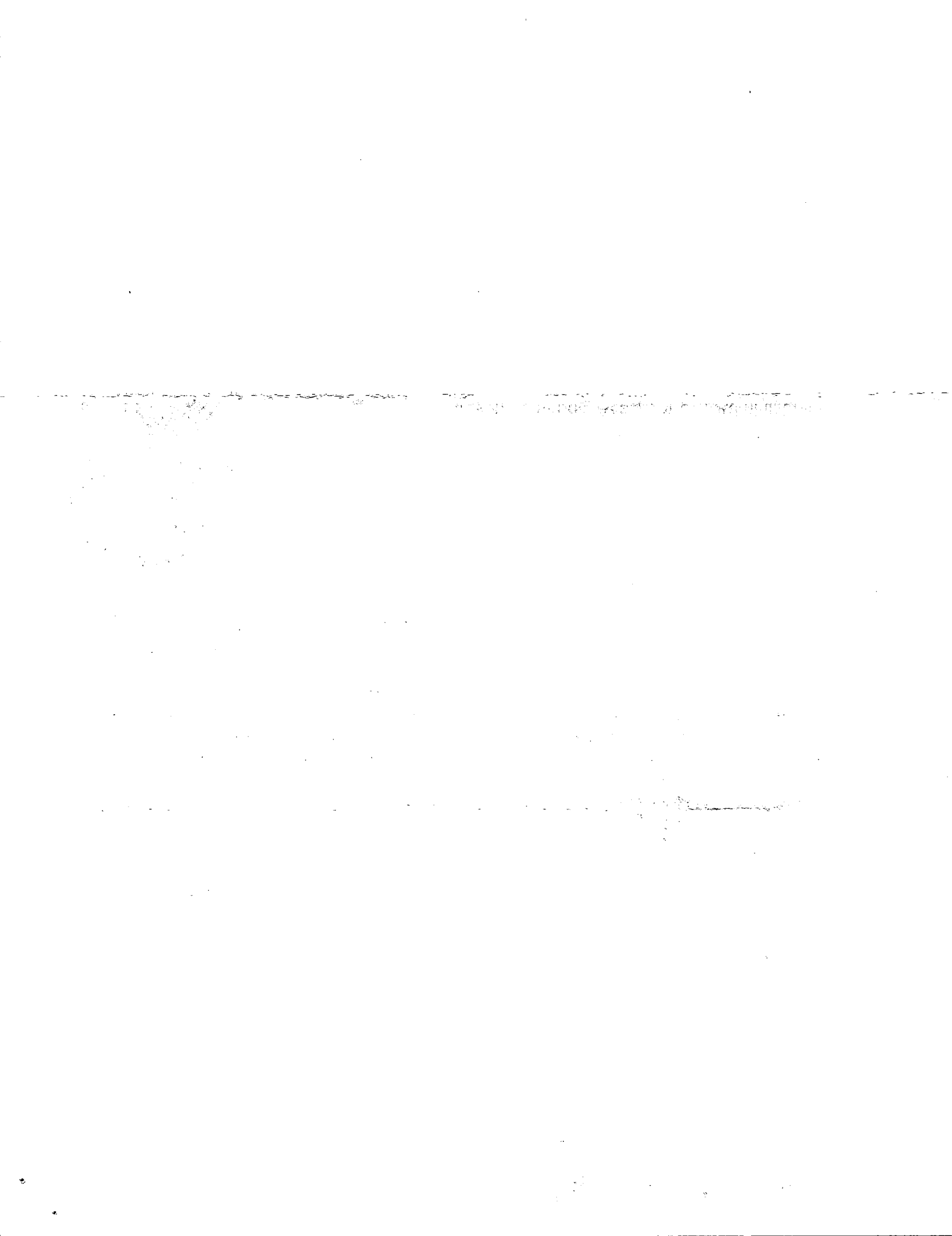


871064

\$20.00
Page: 2 of 4
4/25/2018 11:08 AM
Burleigh County

Recorder, the territory herein described shall be a part of the corporate limits of the City of Bismarck, North Dakota.

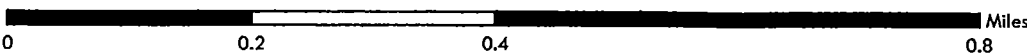
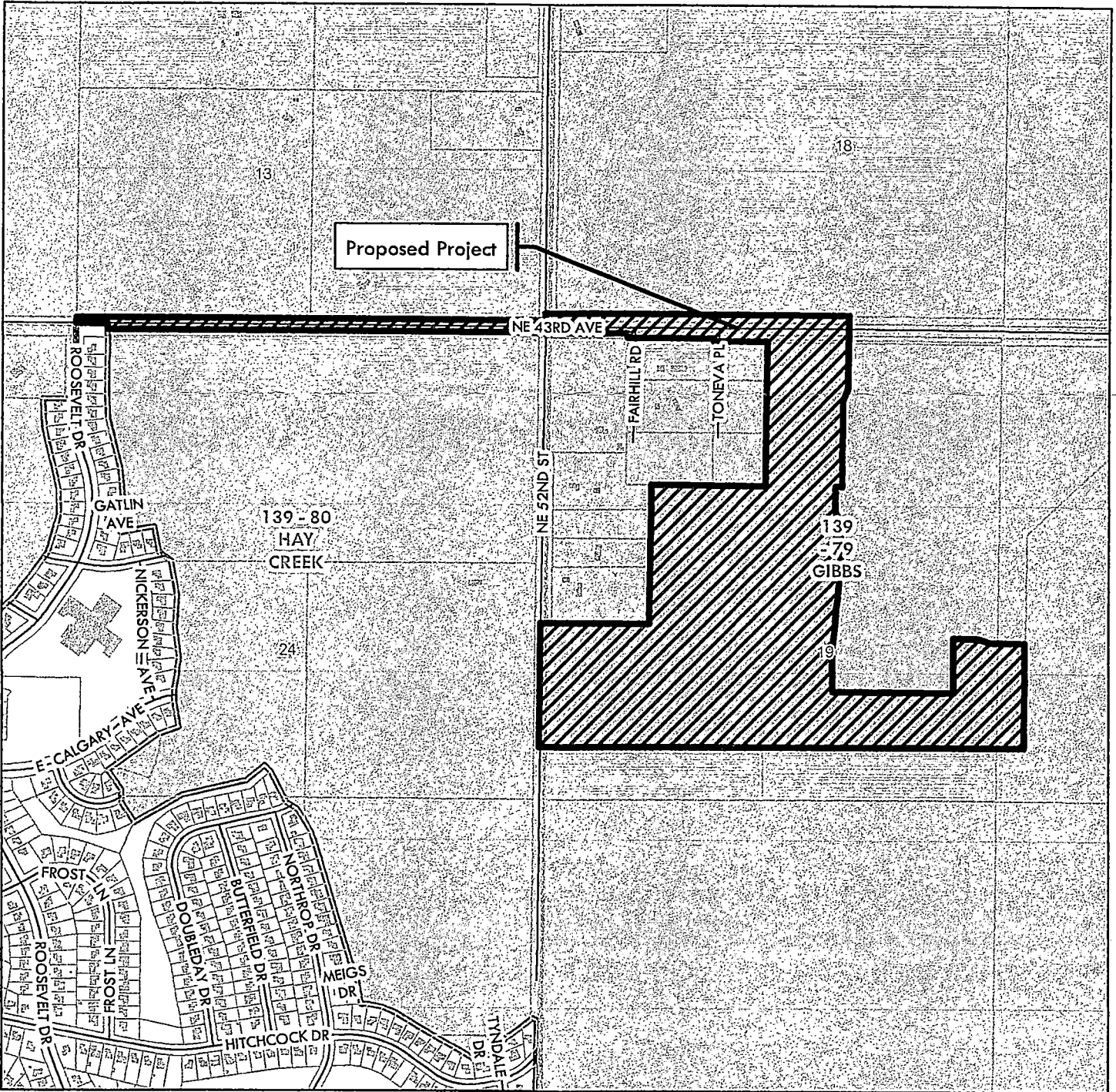






Proposed Annexation
Silver Ranch First Addition - Phase I

Trakit Project ANN2017-007
Location Map

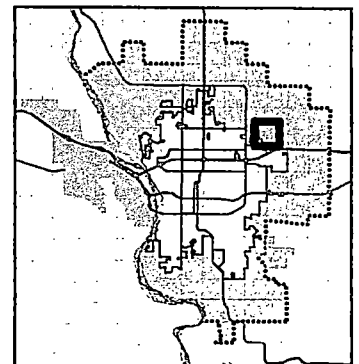


City Limits



Bismarck ETA Jurisdiction

Section, township, and range indicated in orange



City of Bismarck
Community Development Department
Planning Division
November 22, 2017 (HLB)

This map is for representational use only and does not represent a survey. No liability is assumed as to the accuracy of the data delineated hereon.

